

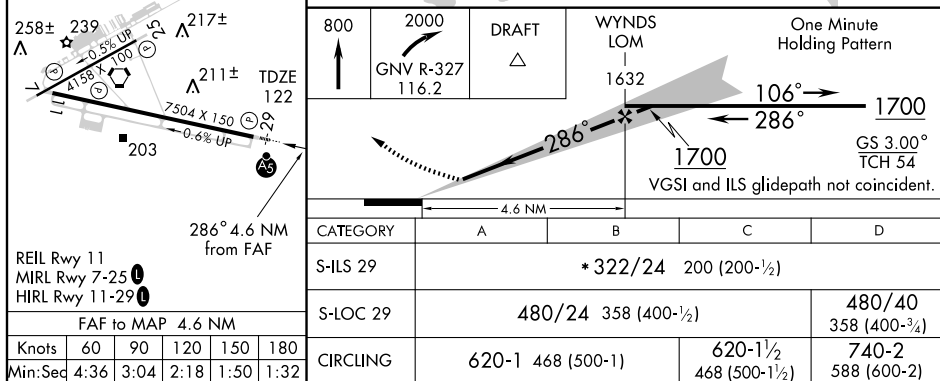
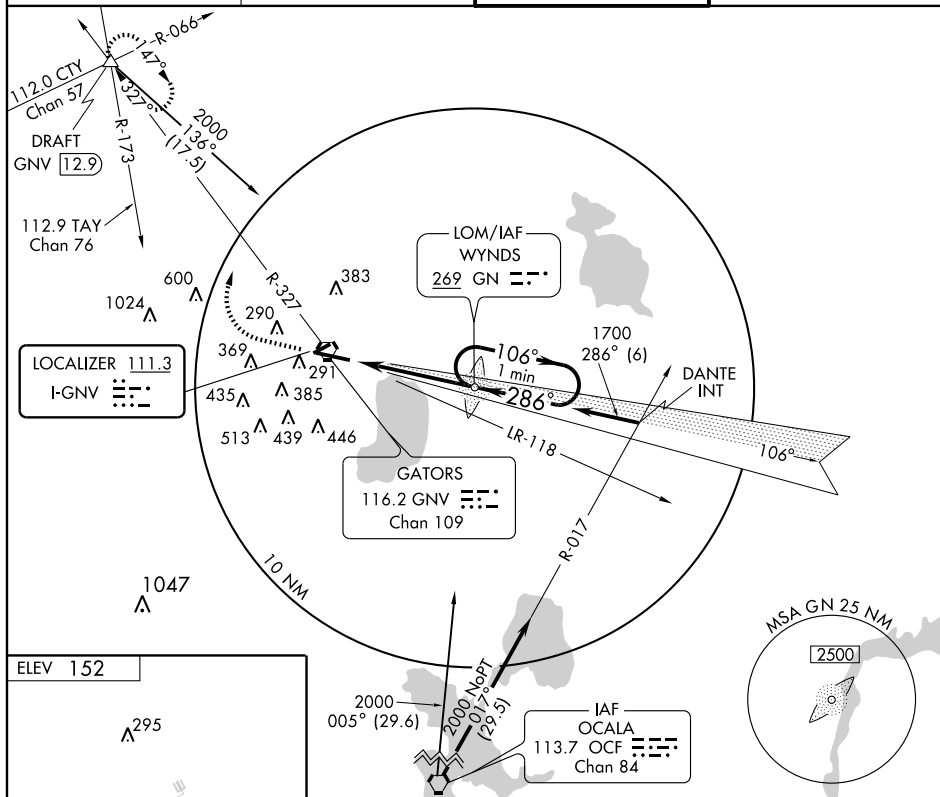


LOC I-GNV <b><u>111.3</u></b>	APP CRS <b>286°</b>	Rwy Idg <b>7504</b> TDZE <b>122</b> Apt Elev <b>152</b>
----------------------------------	------------------------	---

ILS or LOC RWY 29  
GAINESVILLE RGNL (GNV)

 ASR	* RVR 1800 authorized with the use of FD or AP or HUD to DA.	MALSR  +11m	MISSED APPROACH: Climb to 800 then climbing right turn to 2000 via GNV VORTAC R-327 to DRAFT Int and hold.
--	--	--	--

ATIS <b>127.15</b>	JACKSONVILLE APP CON <b>118.175 338.25</b>	GAINESVILLE TOWER★ <b>119.55 (CTAF) 0 353.7</b>	GND CON <b>121.7</b>
-----------------------	---	--	-------------------------



**SE-3, 31 JUL 2008 to 28 AUG 2008**

SE-3, 31 JUL 2008 to 28 AUG 2008