

VOR/DME MVY	APP CRS	Rwy Idg	5500
114.5	247°	TDZE	63
Chan 92		Apt Elev	68

VOR RWY 24

VINEYARD HAVEN / MARTHAS VINEYARD (MVY)

**⚠** If local altimeter setting not received, use Hyannis altimeter setting and increase all MDAs 60 feet.

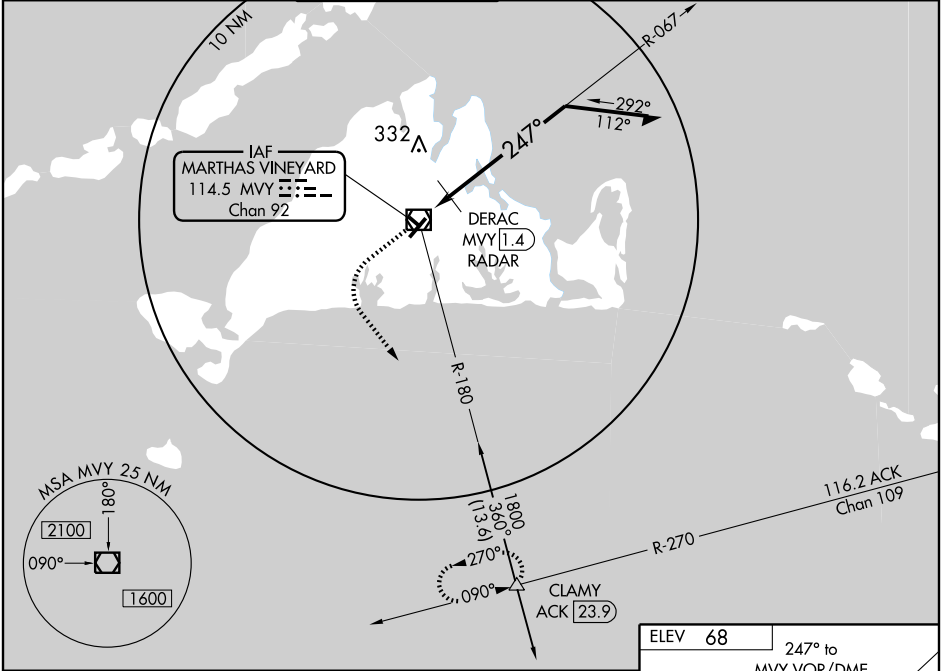
**⚠** For inoperative MALS, increase DERAC fix minimums Cat D visibility to RVR 6000.

MALS

**AS**

MISSED APPROACH: Climb to 600 then climbing left turn to 2500 via MVY VOR/DME R-180 to CLAMY Int and hold.

ATIS 126.25	CAPE APP CON ★ 134.65	VINEYARD TOWER ★ 121.4 (CTAF)	GND CON 121.8	CLNC DEL 134.65 (When tower closed)	UNICOM 122.95
----------------	--------------------------	----------------------------------	------------------	---	------------------



600

2500

CLAMY

MVY R-180 114.5

VOR/DME

DERAC MVY 1.4 RADAR

067°

247°

1800

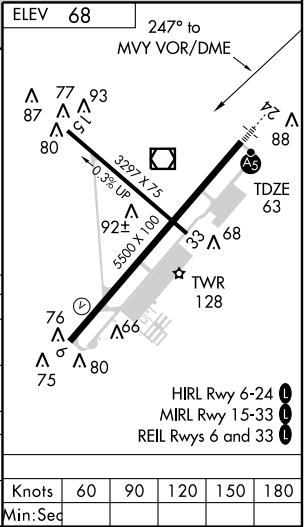
500\*

Remain within 10 NM

\* 560 when using Hyannis altimeter setting.

0.2 1.2 NM

CATEGORY	A	B	C	D
S-24	500/24 437 (500-½)		500/40 437 (500-¾)	500/50 437 (500-1)
CIRCLING	500-1 432 (500-1)	520-1 452 (500-1)	520-1½ 452 (500-1½)	620-2 552 (600-2)
DERAC FIX MINIMUMS				
S-24	440/24 377 (400-½)			440/50 377 (400-1)
CIRCLING	460-1 392 (400-1)	520-1 452 (500-1)	520-1½ 452 (500-1½)	620-2 552 (600-2)



VOR RWY 24

NE-1, 31 JUL 2008 to 28 AUG 2008

NE-1, 31 JUL 2008 to 28 AUG 2008