

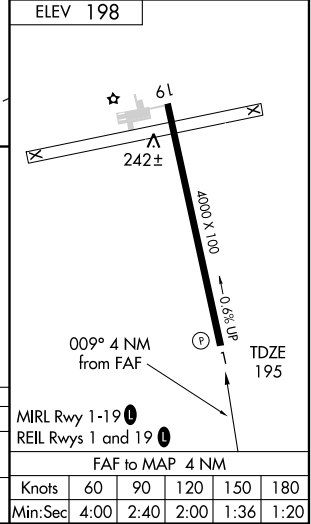
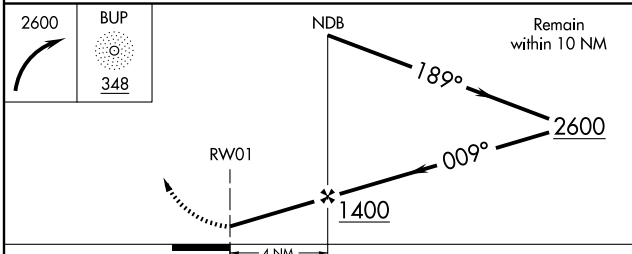
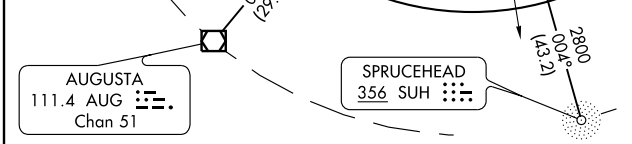
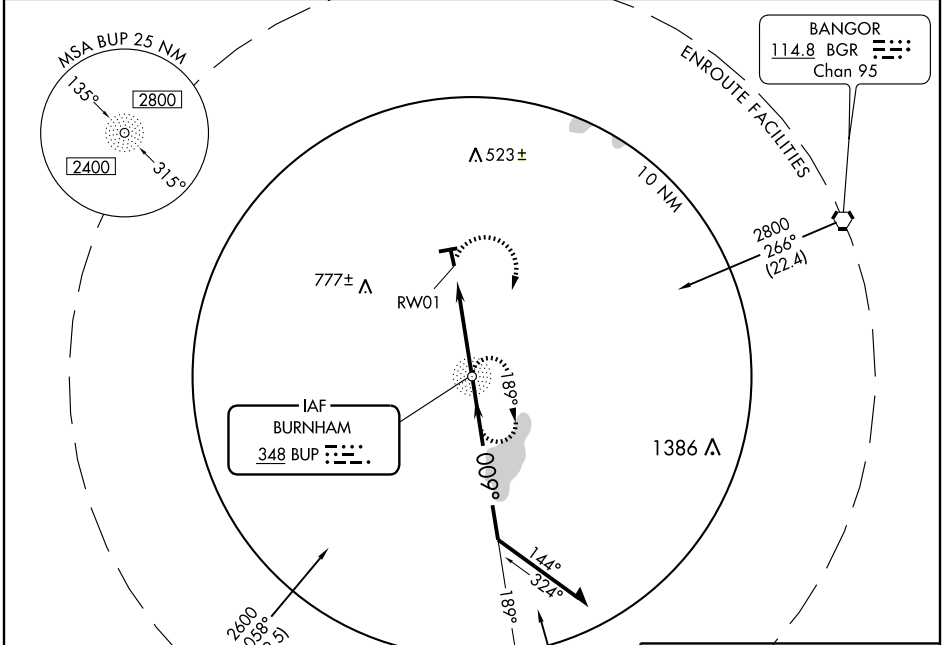
NDB or GPS RWY 1

PITTSFIELD MUNI (2B7)

NDB BUP 348	APP CRS 009°	Rwy Idg TDZE Apt Elev	4000 195 198
-----------------------	------------------------	-----------------------------	---

NA Use Bangor altimeter setting.	MISSED APPROACH: Climbing right turn to 2600 direct BUP NDB and hold.
-------------------------------------	---

BANGOR APP CON 118.925 239.3	UNICOM 122.8 (CTAF) 0
--	---------------------------------



CATEGORY	A	B	C	D
S-1	780-1	585 (600-1)	780-1½ 585 (600-1½)	NA
CIRCLING	840-1	642 (700-1)	840-1¾ 642 (700-1¾)	NA

Knots	60	90	120	150	180
Min:Sec	4:00	2:40	2:00	1:36	1:20

NDB or GPS RWY 1

NE-1, 31 JUL 2008 to 28 AUG 2008

NE-1, 31 JUL 2008 to 28 AUG 2008