
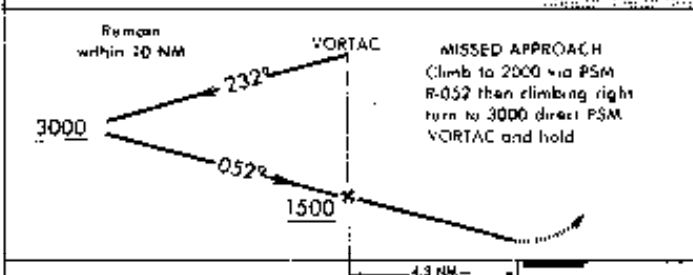
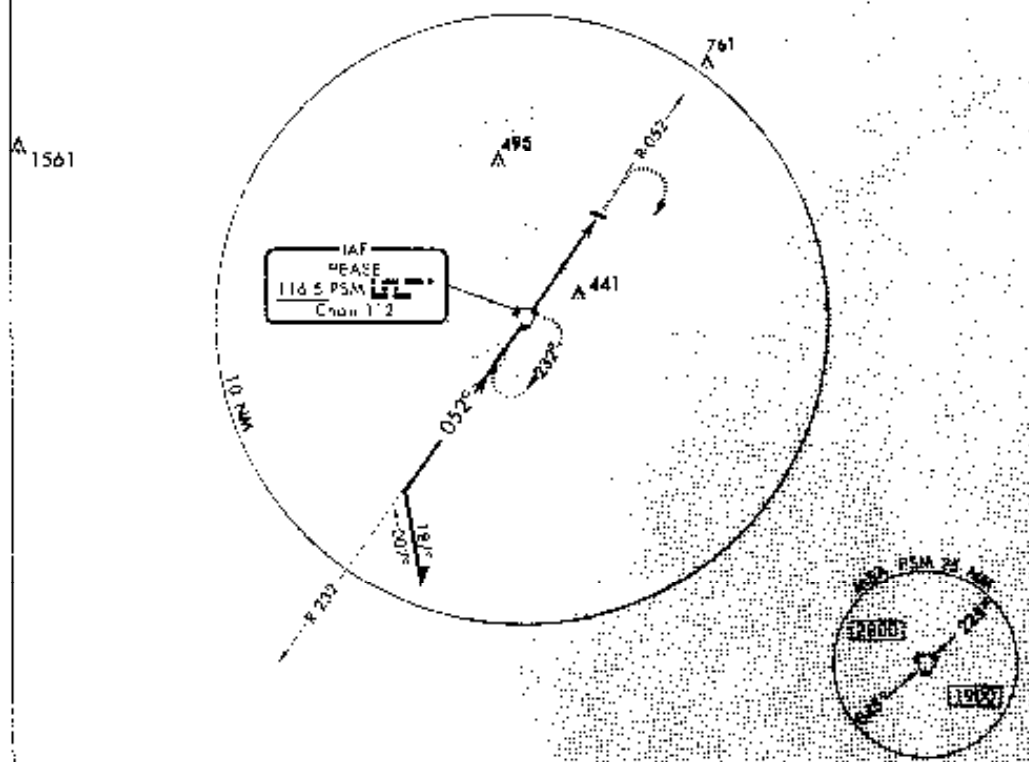


VOR or GPS-A


ELIOT/LITTLEBROOK AIR PARK (3B4)
ELIOT, MAINE

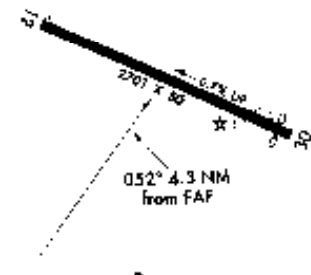
MANCHESTER APP CON *
120.4 353.5
UNICOM 122.8 [CTAF] 



ELEV 130' Rwy 30 ldg 2615'

CATEGORY	A	B	C	D
CIRCLING	720-1	590 (600-1)	NA	

Use Portsmouth, NH altimeter setting.
 NA



FAF to MAP 3 NM

Knots	60	90	120	150	180
Min:Sec	4:18	2:52	2:09	1:43	1:26

VOR or GPS-A

43°09'N-70°46'W

ELIOT, MAINE
ELIOT/LITTLEBROOK AIR PARK (3B4)